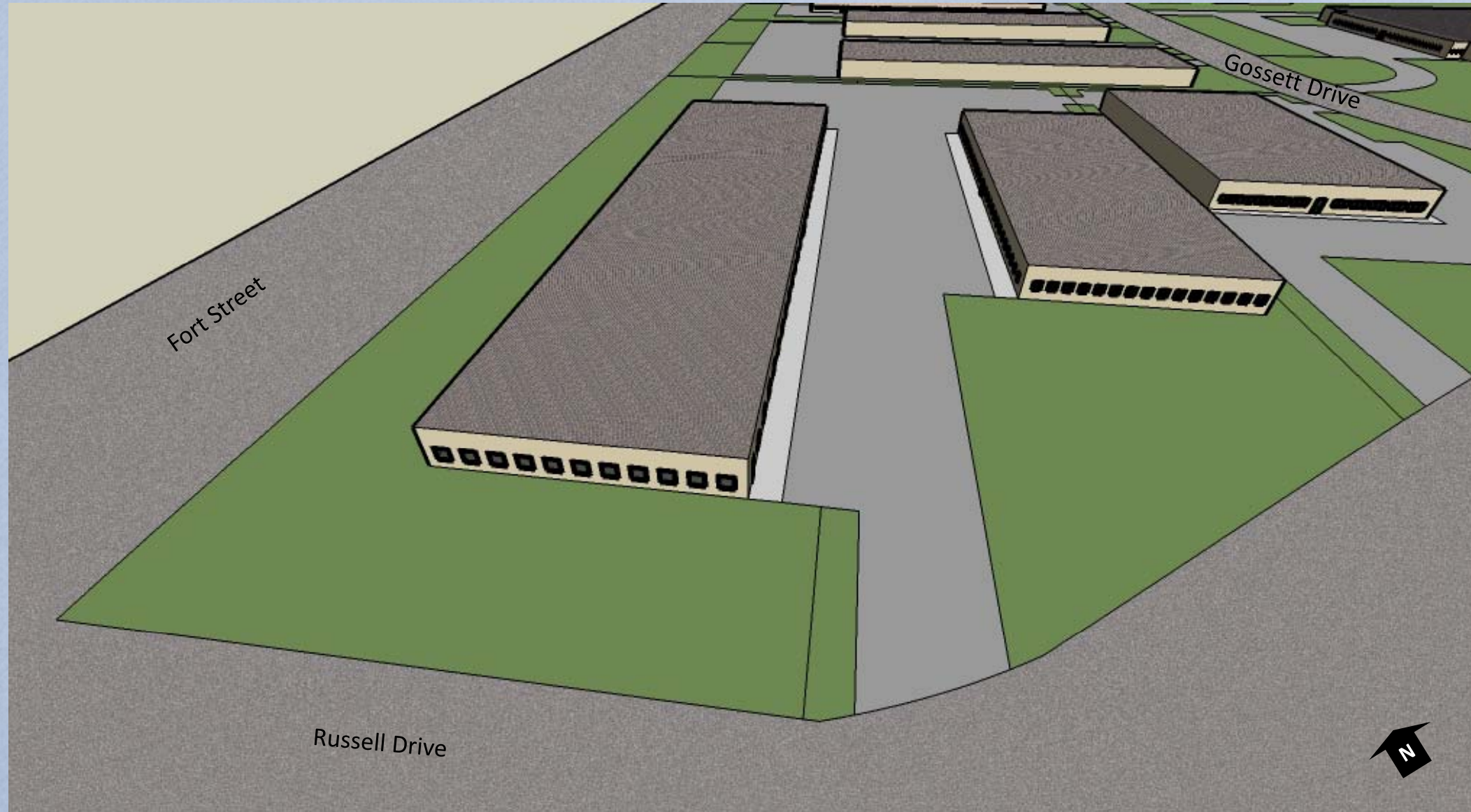
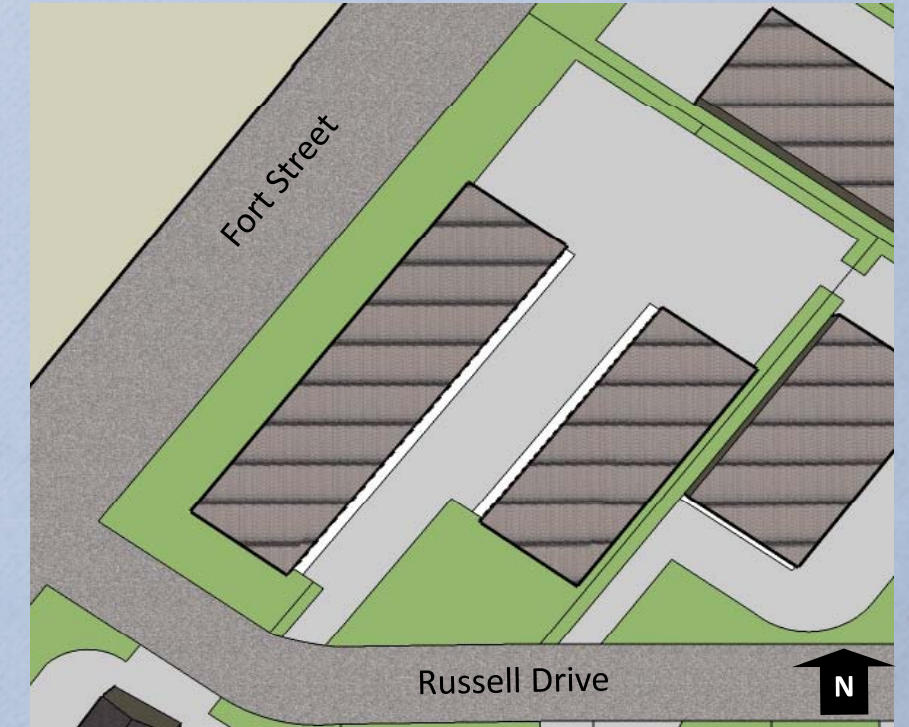


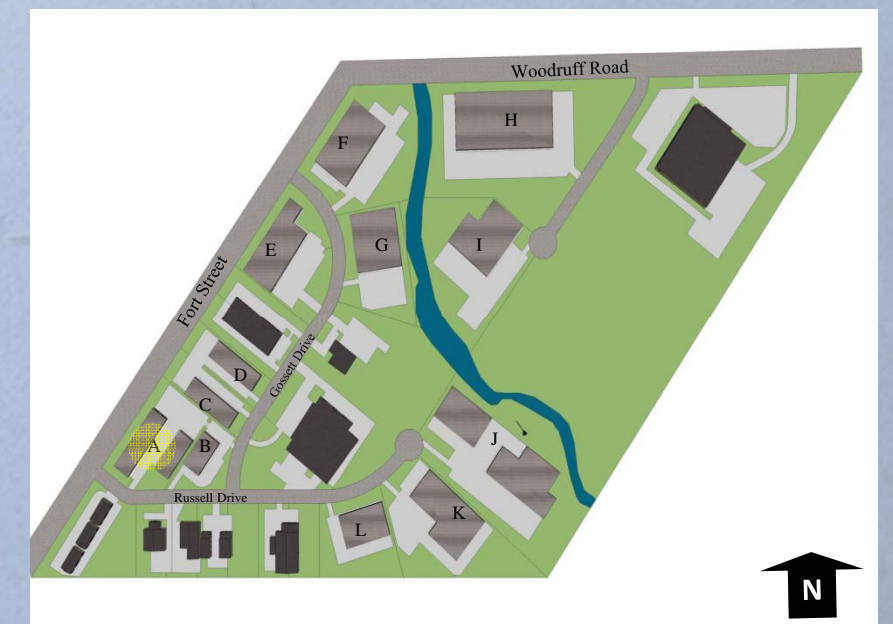
ROCKWOOD COMMERCE PARK
CONCEPT PLAN - PARCEL A
 LOTS 1 AND 2, ROCKWOOD COMMERCE PARK NO. 1



PARCEL A - PLAN VIEW



SITE PLAN OVERVIEW



Note: This hypothetical development concept shows two buildings with a total of 41,750 sq. ft. on a parcel (two lots) of approximately 141,000 sq. ft.

Note: This Concept Plan is intended to show possible future development based upon building lot coverage ranges similar to developments previously approved in the Commerce Park. Actual building coverage will depend upon a detailed site investigation and formal site plan to determine compliance with the City's Zoning Ordinance.

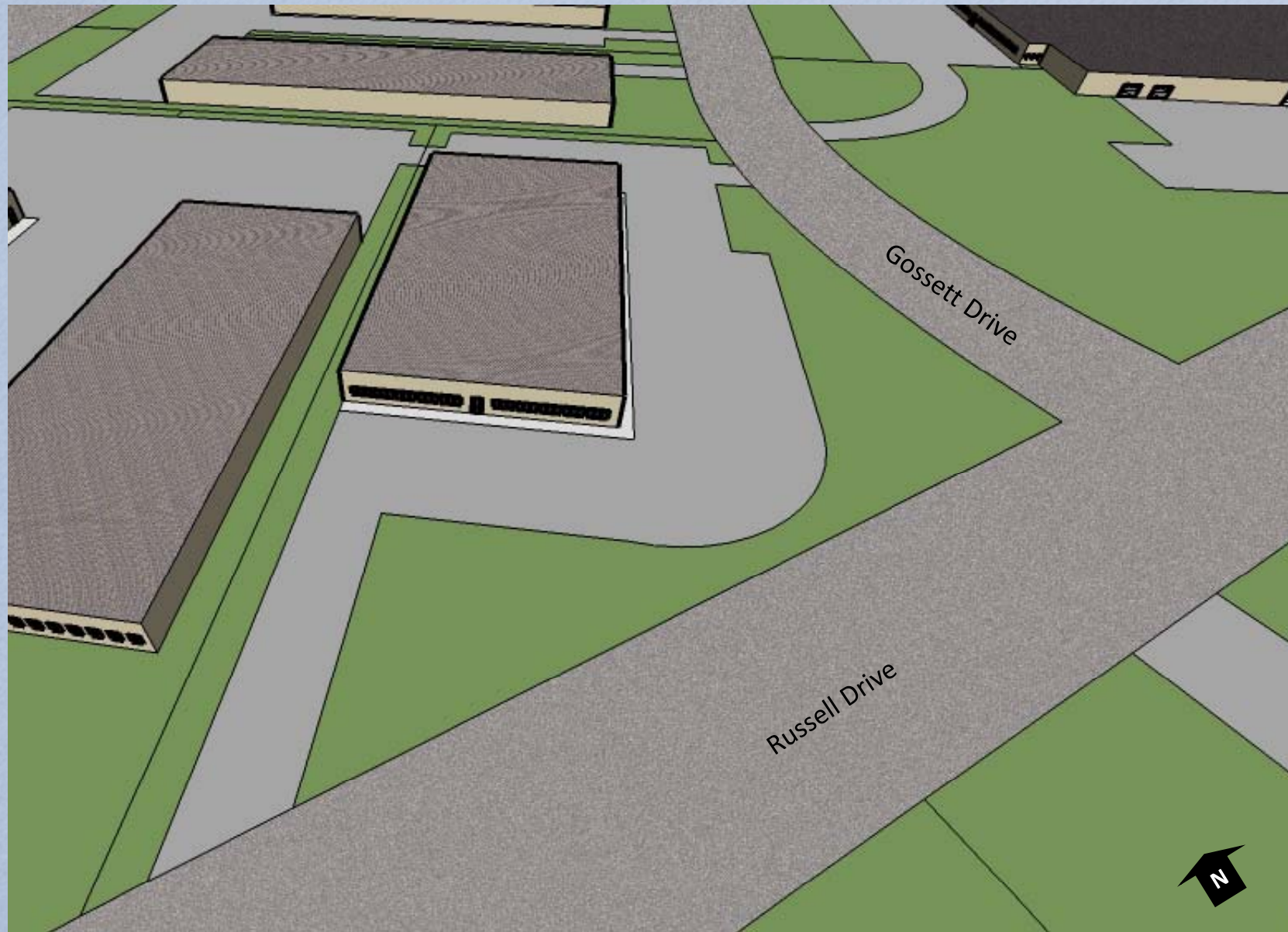


BIRCHLER ARROYO
 ASSOCIATES, INC.

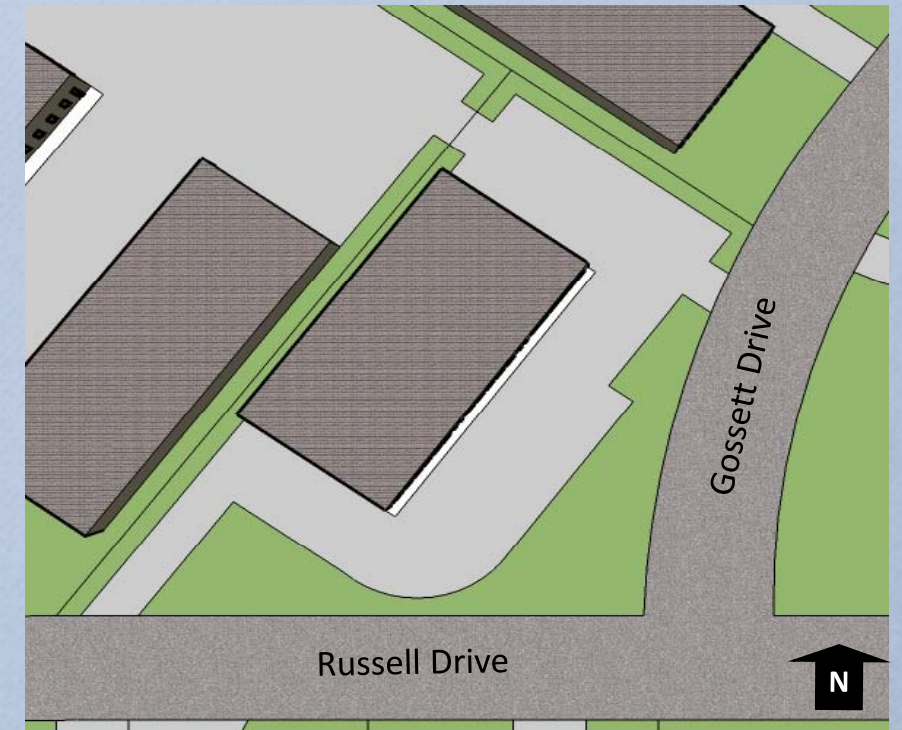
ROCKWOOD COMMERCE PARK

CONCEPT PLAN - PARCEL B

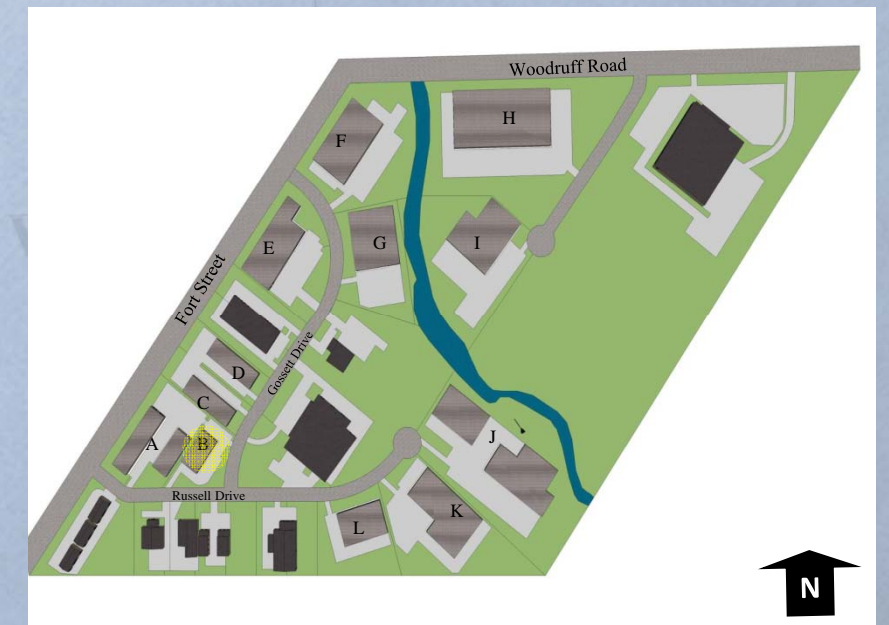
LOT 3, ROCKWOOD COMMERCE PARK NO. 1



PARCEL B - PLAN VIEW



SITE PLAN OVERVIEW



Note: This hypothetical development concept shows one building with a total of 15,440 sq. ft. on a parcel of approximately 63,000 sq. ft.

Note: This Concept Plan is intended to show possible future development based upon building lot coverage ranges similar to developments previously approved in the Commerce Park. Actual building coverage will depend upon a detailed site investigation and formal site plan to determine compliance with the City's Zoning Ordinance.



ROCKWOOD COMMERCE PARK

CONCEPT PLAN - PARCEL C

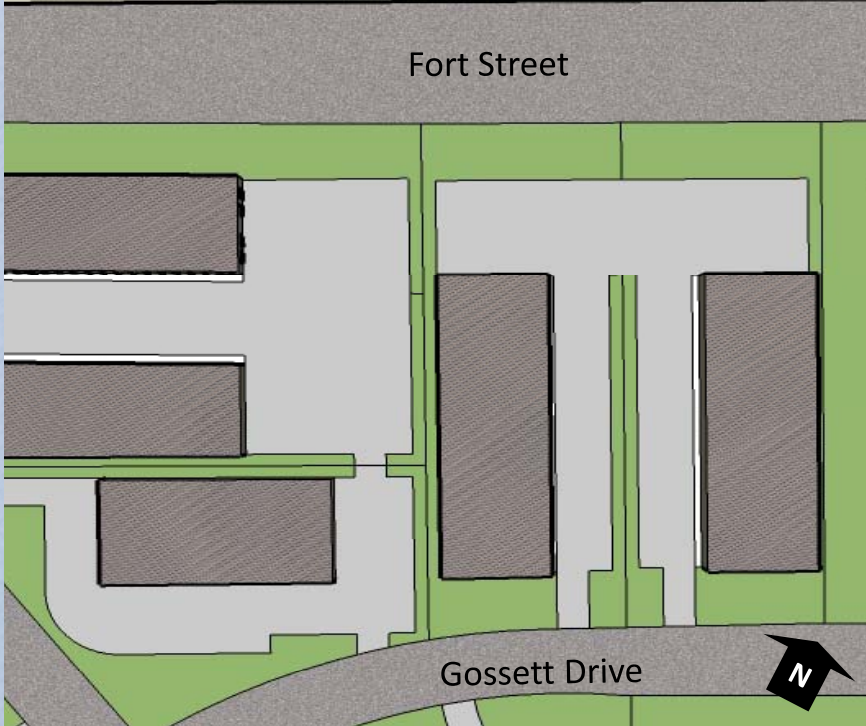
LOT 4, ROCKWOOD COMMERCE PARK NO. 1



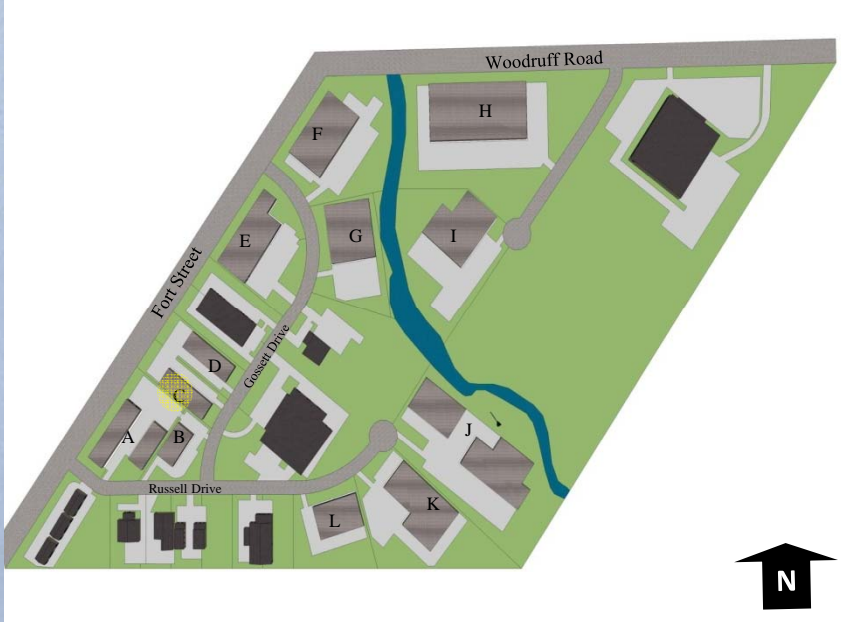
Note: This hypothetical development concept shows one building with a total of ~21,500 sq. ft. on a parcel of approximately 67,000 sq. ft.

Note: This Concept Plan is intended to show possible future development based upon building lot coverage ranges similar to developments previously approved in the Commerce Park. Actual building coverage will depend upon a detailed site investigation and formal site plan to determine compliance with the City's Zoning Ordinance.

PARCEL C - PLAN VIEW



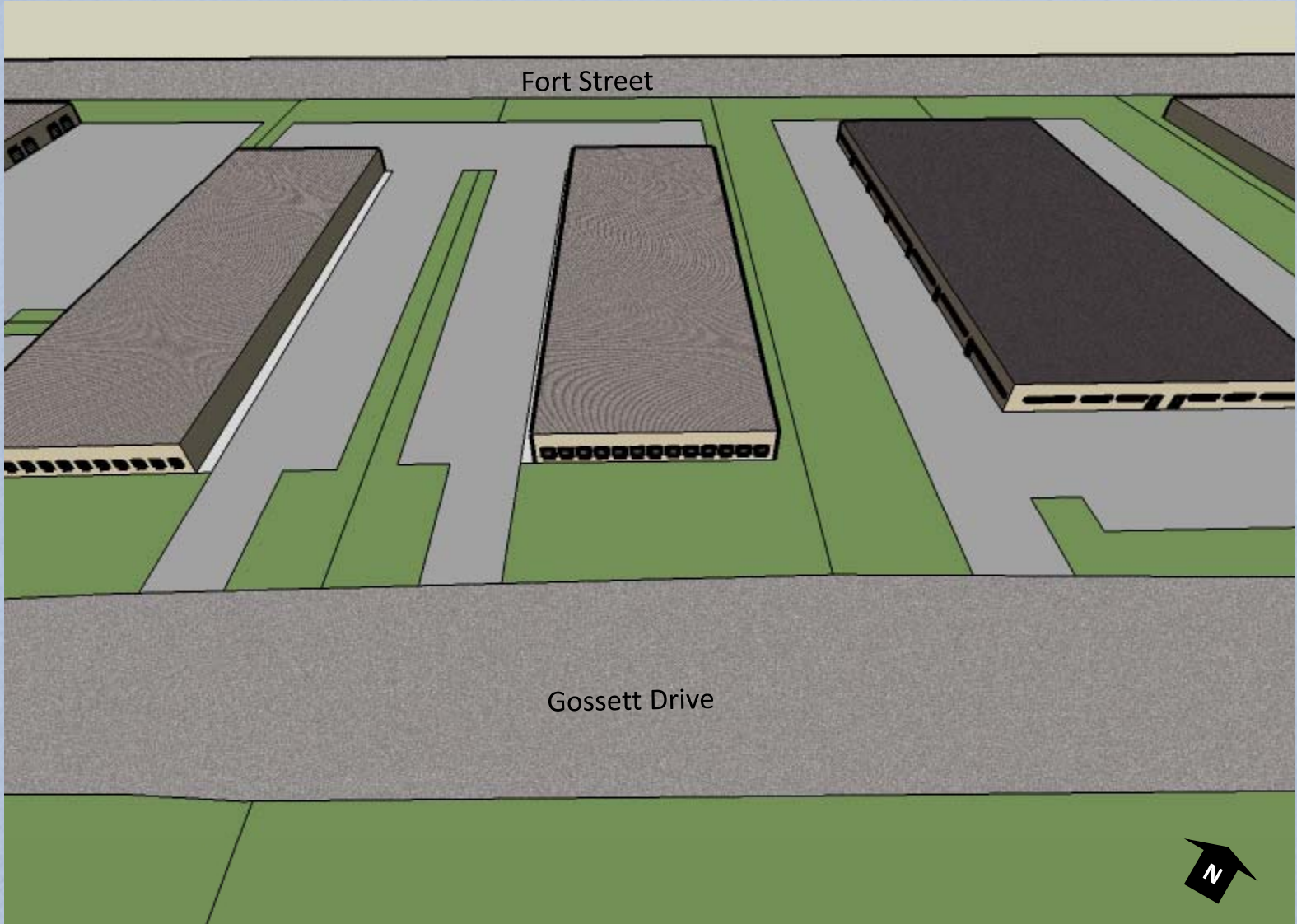
SITE PLAN OVERVIEW



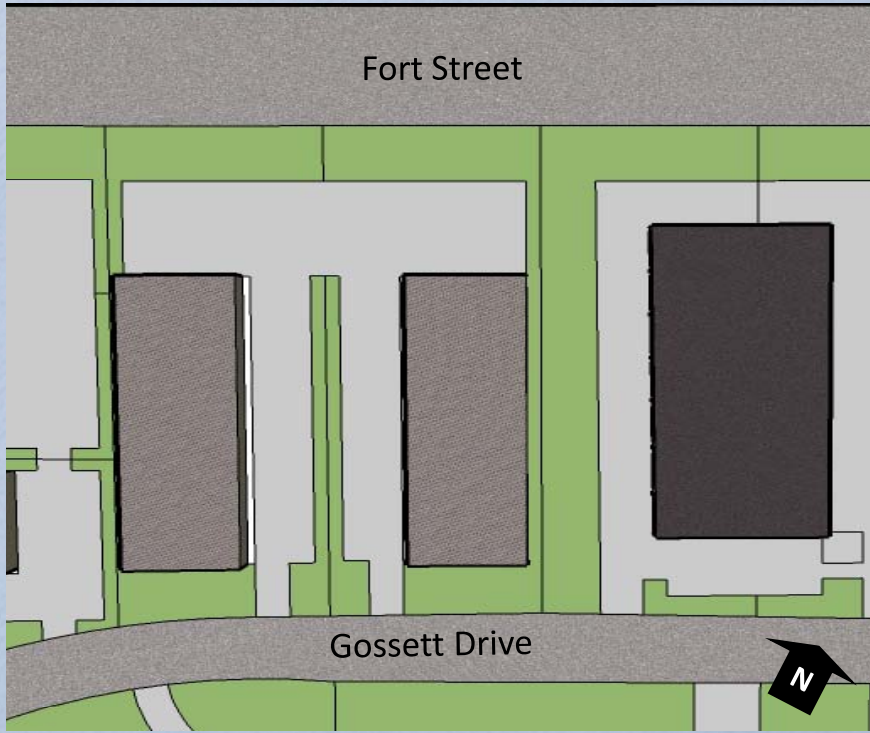
ROCKWOOD COMMERCE PARK

CONCEPT PLAN - PARCEL D

LOT 5, ROCKWOOD COMMERCE PARK NO. 1



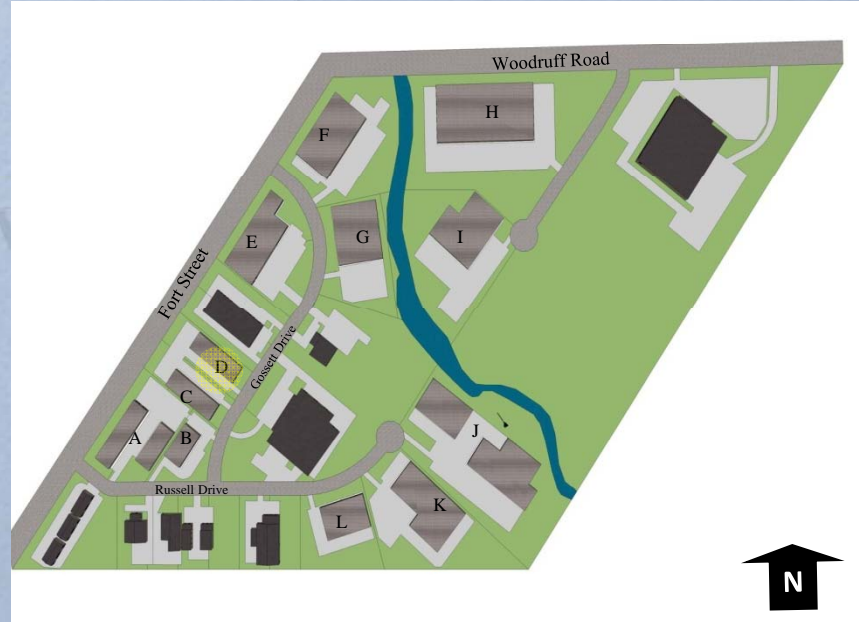
PARCEL D - PLAN VIEW



Note: This hypothetical development concept shows one building with a total of ~21,225 sq. ft. on a parcel of approximately 66,000 sq. ft.

Note: This Concept Plan is intended to show possible future development based upon building lot coverage ranges similar to developments previously approved in the Commerce Park. Actual building coverage will depend upon a detailed site investigation and formal site plan to determine compliance with the City's Zoning Ordinance.

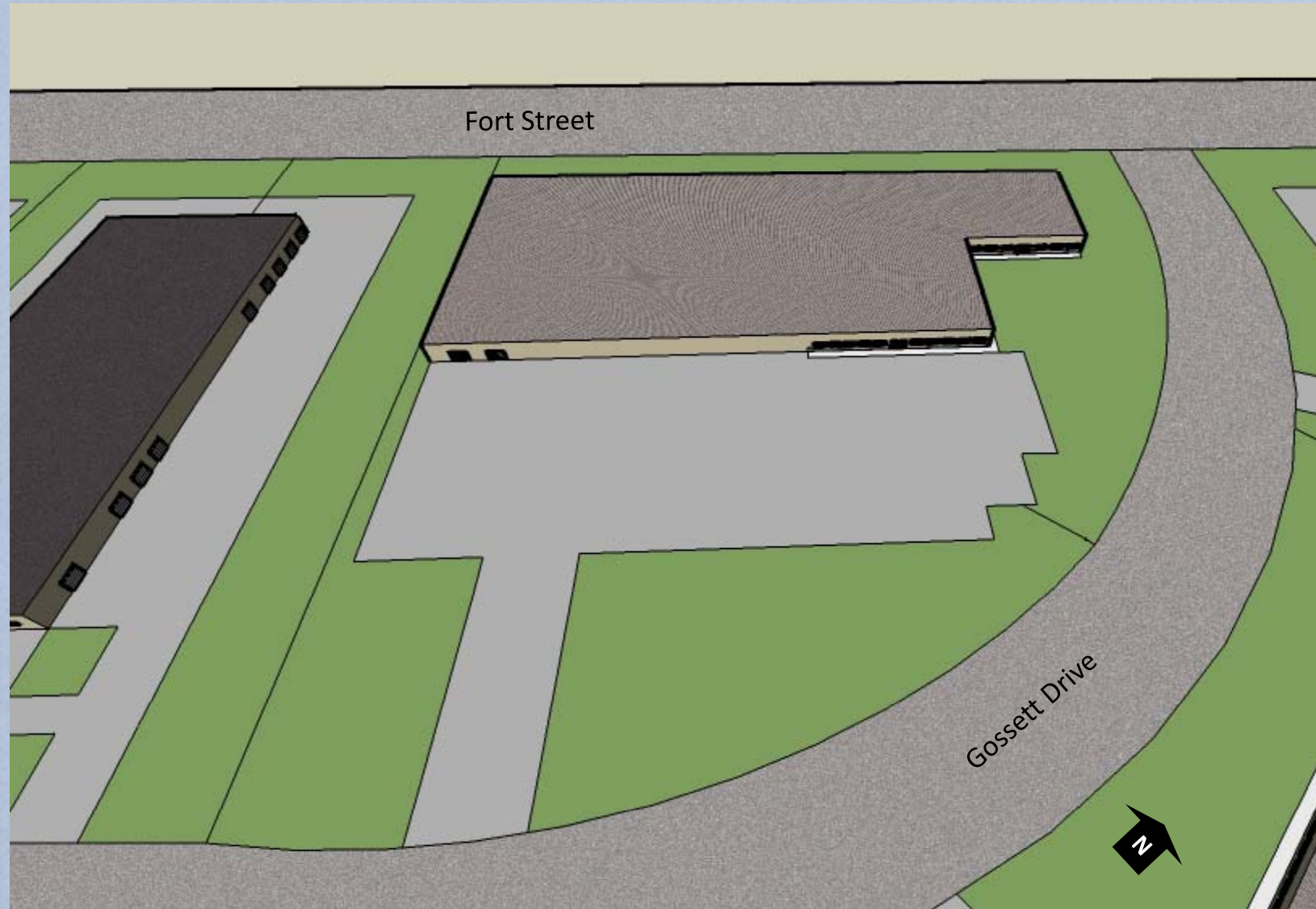
SITE PLAN OVERVIEW



ROCKWOOD COMMERCE PARK

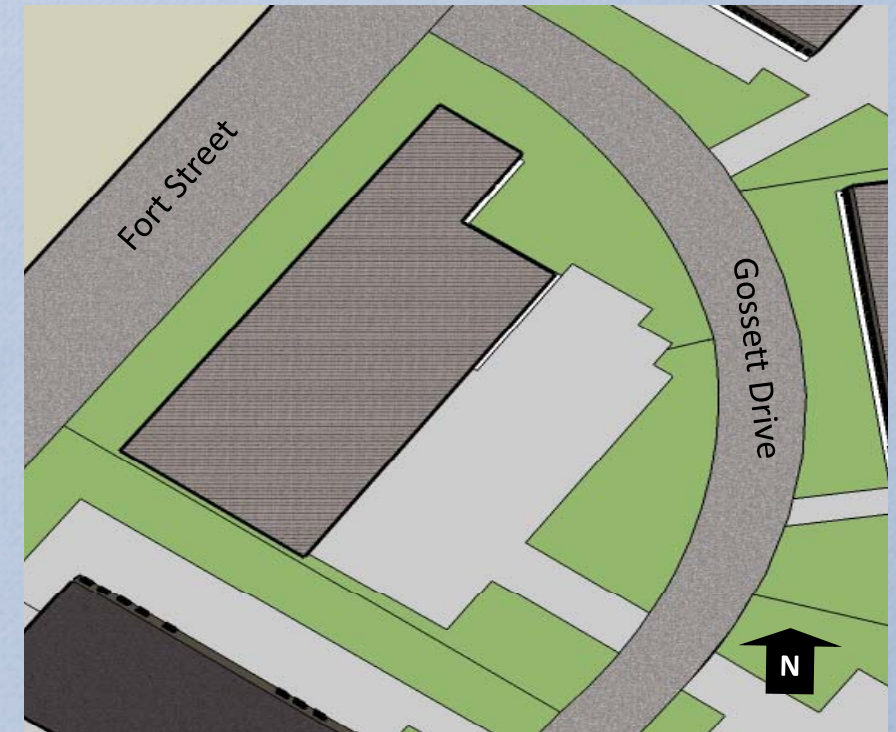
CONCEPT PLAN - PARCEL E

LOTS 8 AND 9, ROCKWOOD COMMERCE PARK NO. 1

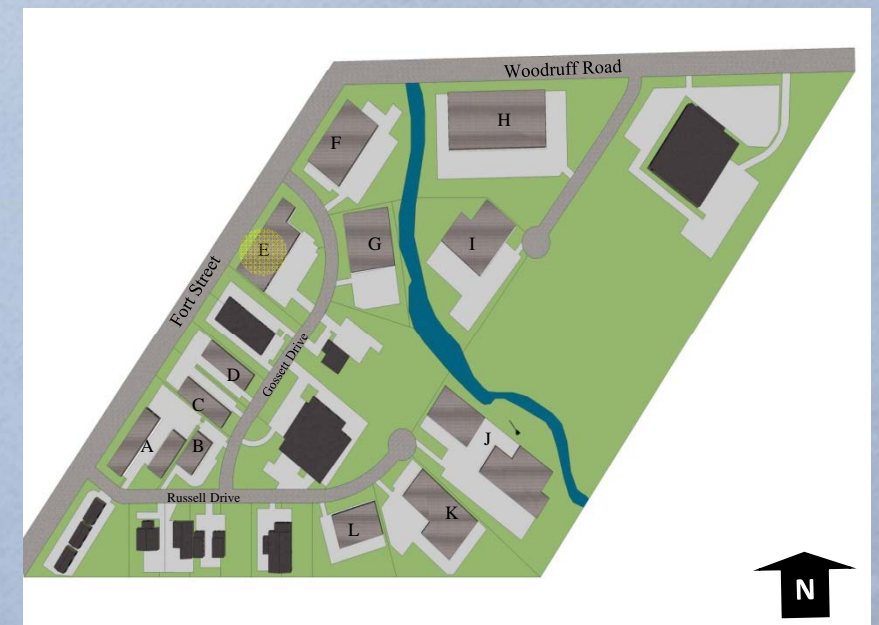


Note: This hypothetical development concept shows one building with a total of ~54,860 sq. ft. on a parcel of approximately 171,000 sq. ft.

PARCEL E - PLAN VIEW

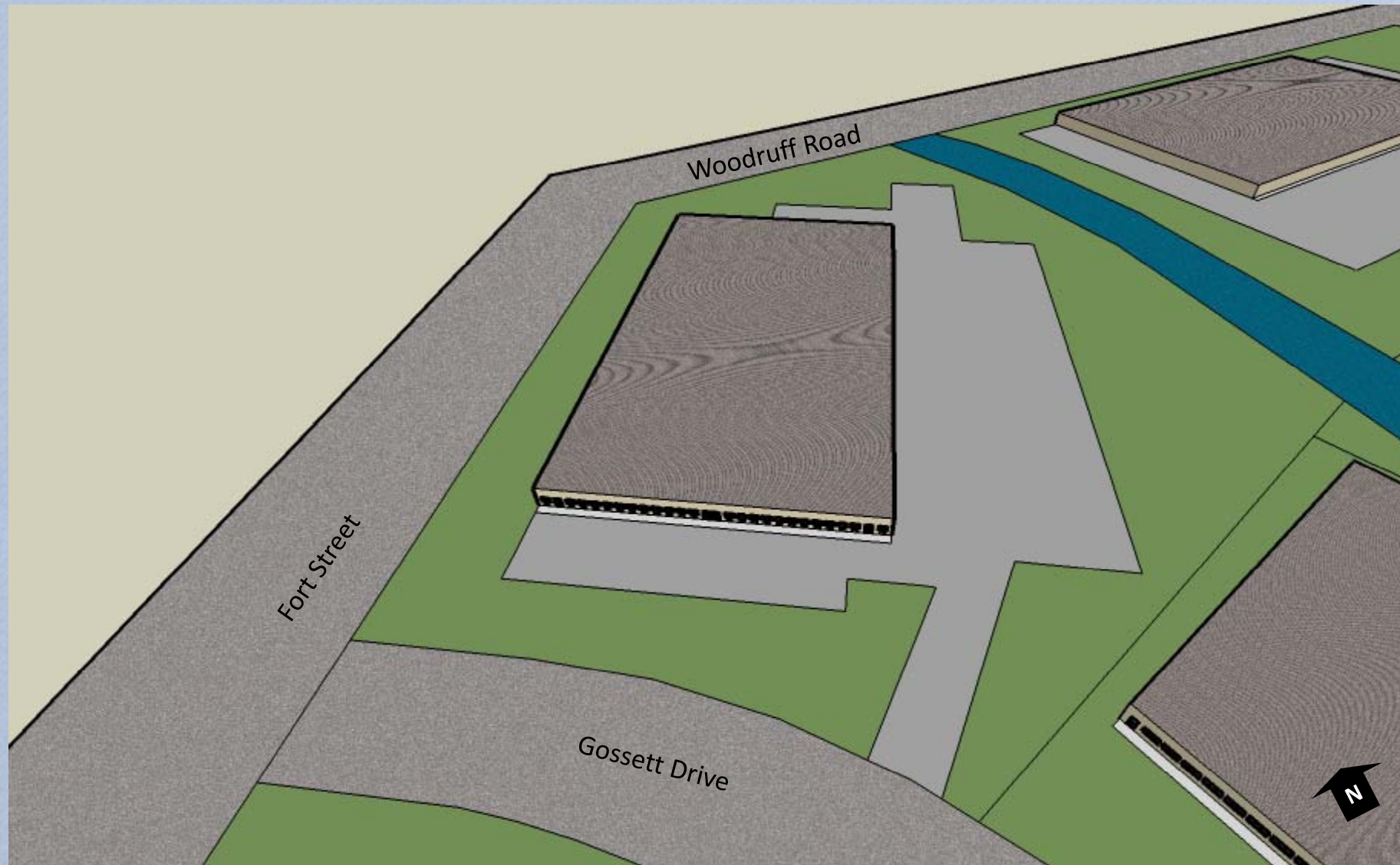


SITE PLAN OVERVIEW



Note: This Concept Plan is intended to show possible future development based upon building lot coverage ranges similar to developments previously approved in the Commerce Park. Actual building coverage will depend upon a detailed site investigation and formal site plan to determine compliance with the City's Zoning Ordinance.

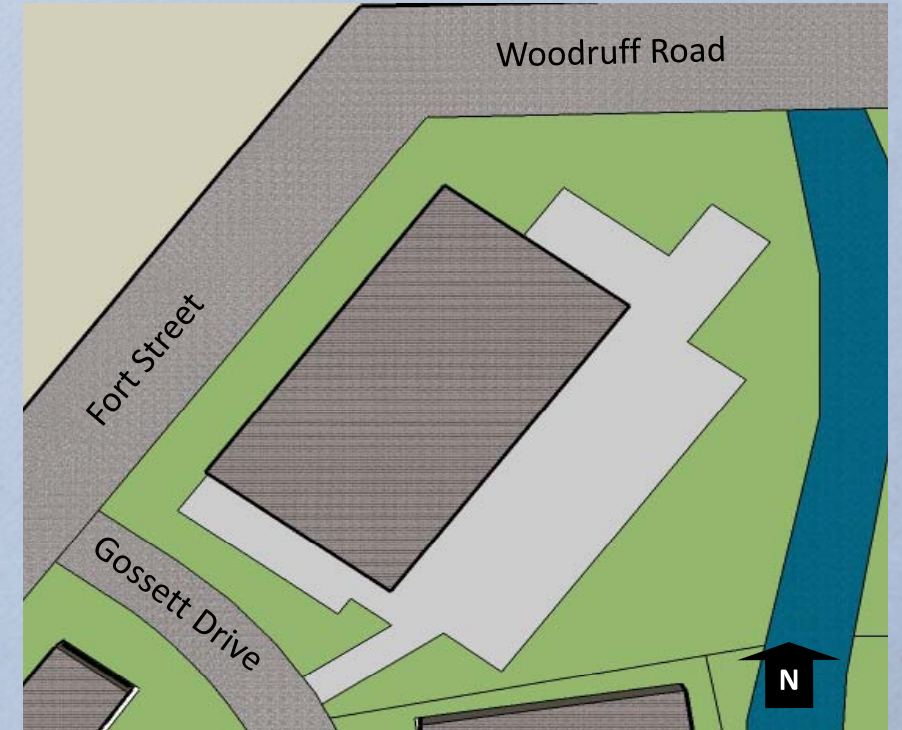
ROCKWOOD COMMERCE PARK
CONCEPT PLAN - PARCEL F



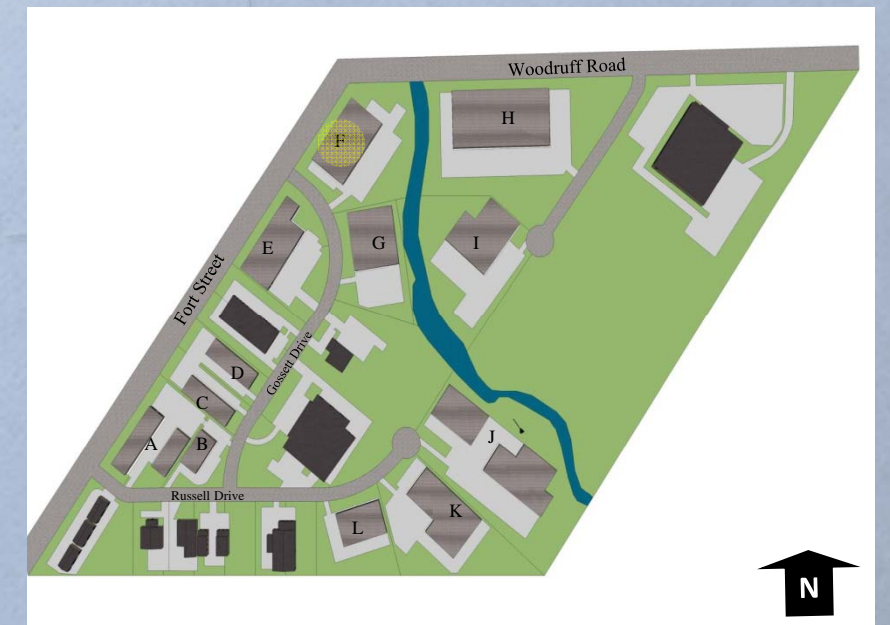
Note: This hypothetical development concept shows one building with a total of ~60,450 sq. ft. on a parcel of approximately 298,000 sq. ft.

Note: This Concept Plan is intended to show possible future development based upon building lot coverage ranges similar to developments previously approved in the Commerce Park. Actual building coverage will depend upon a detailed site investigation and formal site plan to determine compliance with the City's Zoning Ordinance.

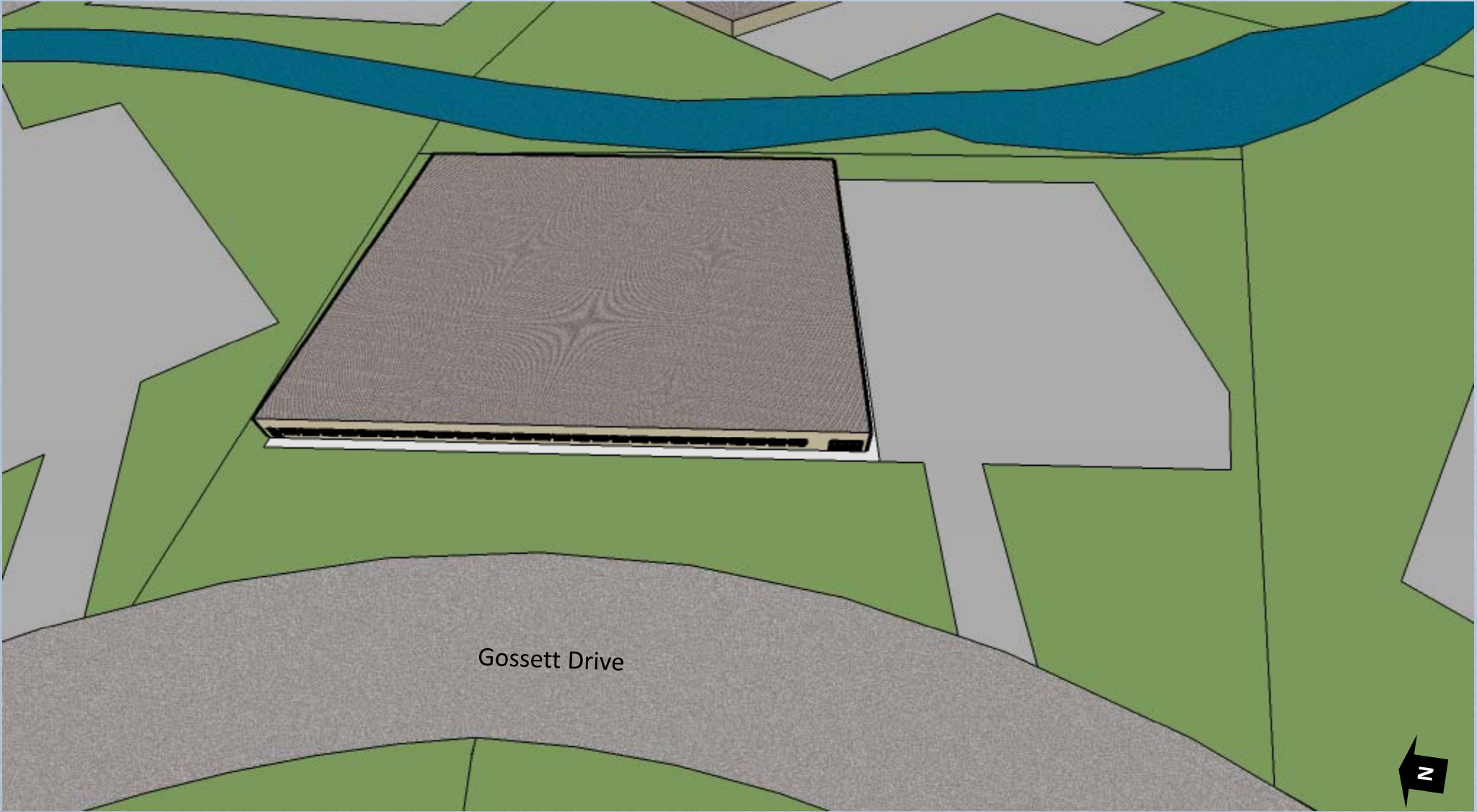
PARCEL F - PLAN VIEW



SITE PLAN OVERVIEW



ROCKWOOD COMMERCE PARK
 CONCEPT PLAN - PARCEL G

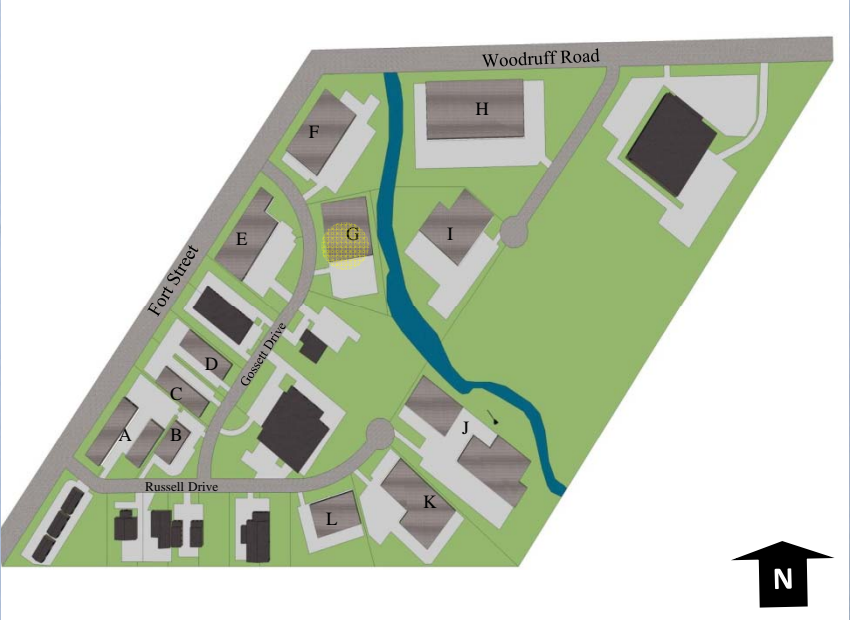


Note: This hypothetical development concept shows one building with a total of ~54,825 sq. ft. on a parcel of approximately 210,000 sq. ft.

PARCEL G - PLAN VIEW



SITE PLAN OVERVIEW



Note: This Concept Plan is intended to show possible future development based upon building lot coverage ranges similar to developments previously approved in the Commerce Park. Actual building coverage will depend upon a detailed site investigation and formal site plan to determine compliance with the City's Zoning Ordinance.

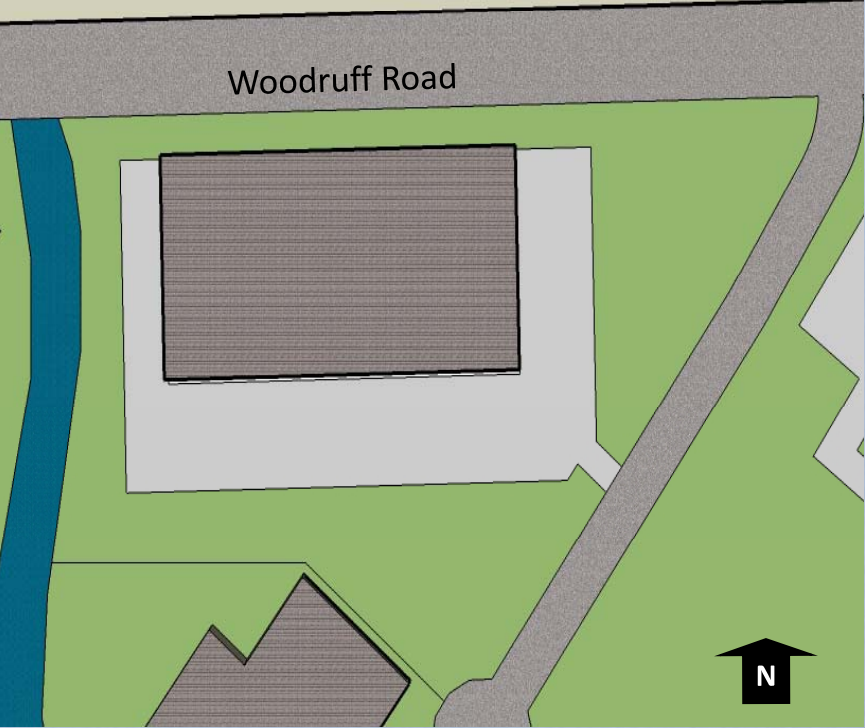


ROCKWOOD COMMERCE PARK
 CONCEPT PLAN - PARCEL H

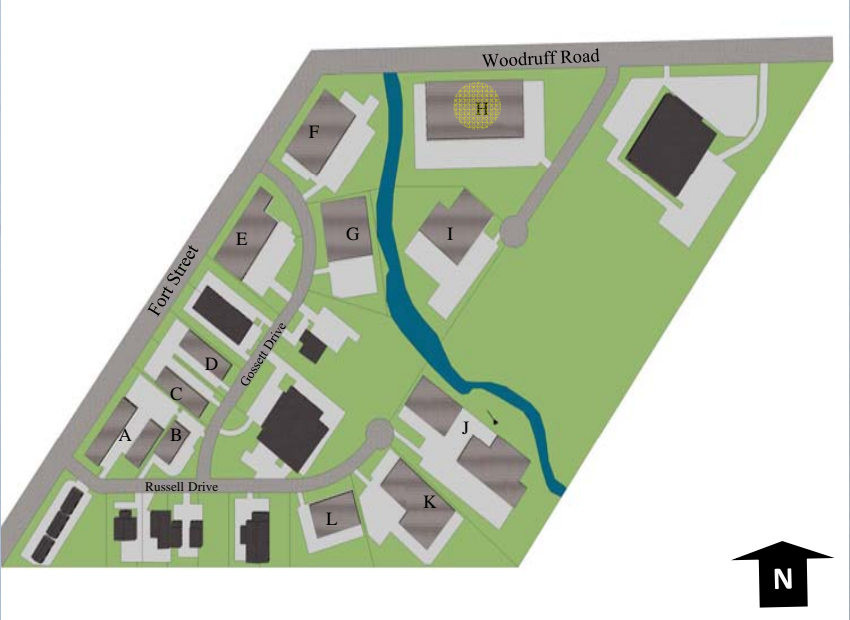


Note: This hypothetical development concept shows one building with a total of ~115,420 sq. ft. on a parcel of approximately 502,000 sq. ft.

PARCEL H - PLAN VIEW



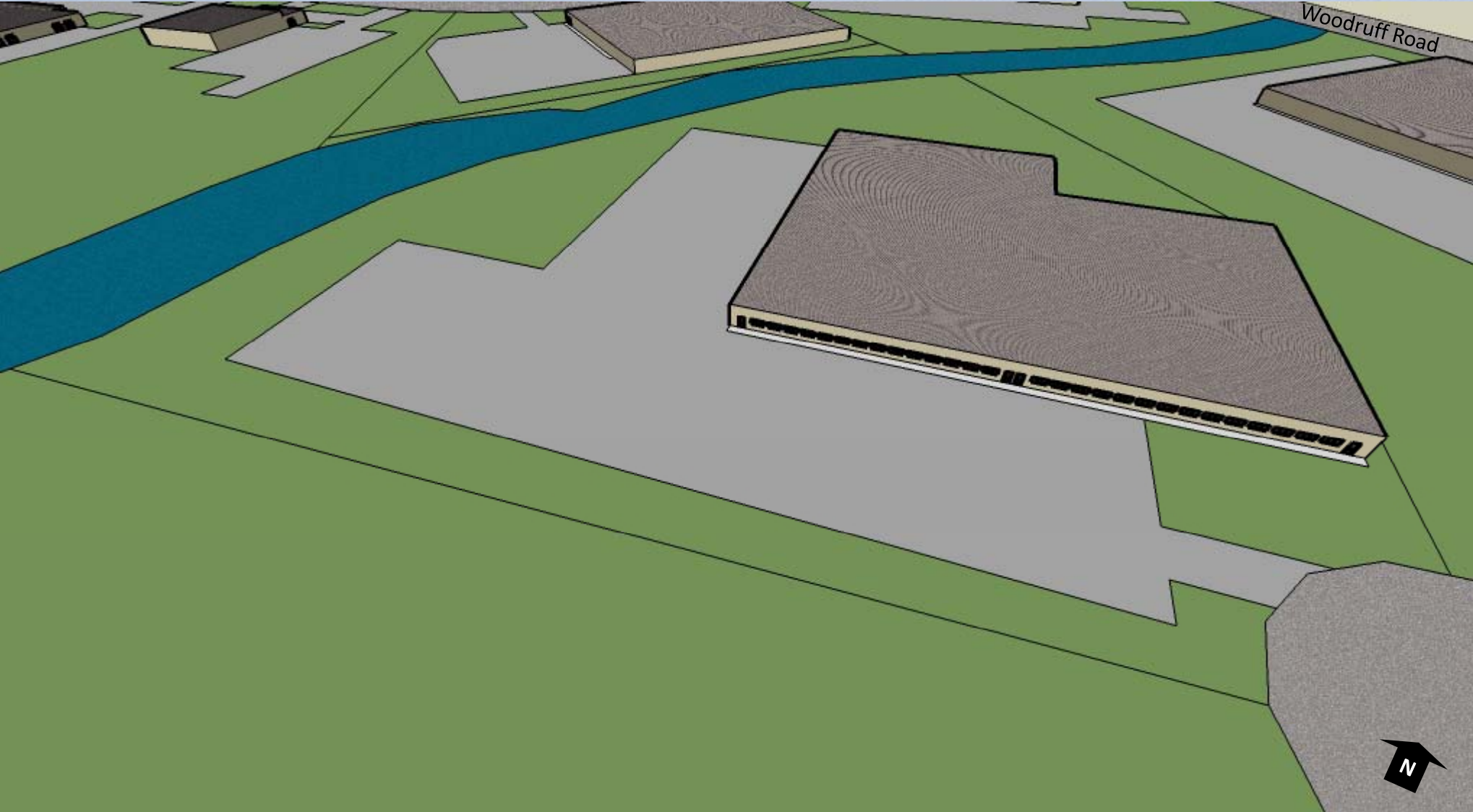
SITE PLAN OVERVIEW



Note: This Concept Plan is intended to show possible future development based upon building lot coverage ranges similar to developments previously approved in the Commerce Park. Actual building coverage will depend upon a detailed site investigation and formal site plan to determine compliance with the City's Zoning Ordinance.

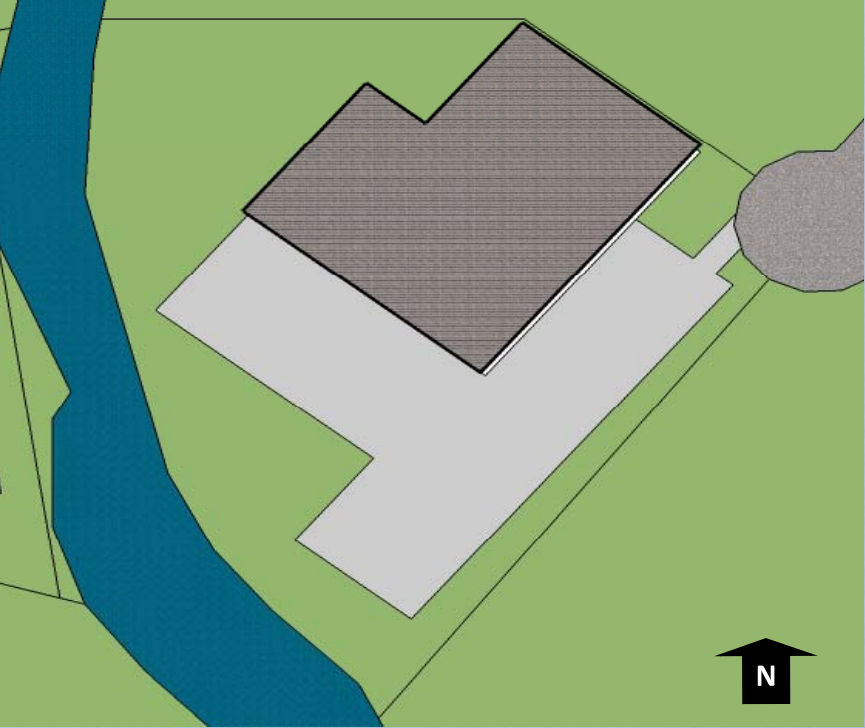


ROCKWOOD COMMERCE PARK
 CONCEPT PLAN - PARCEL I

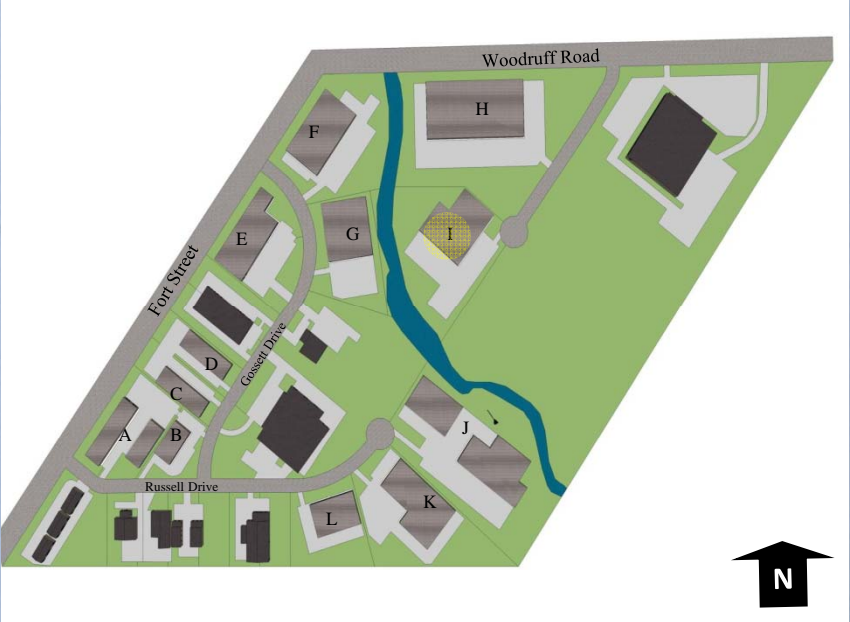


Note: This hypothetical development concept shows one building with a total of ~60,415 sq. ft. on a parcel of approximately 247,000 sq. ft.

PARCEL I - PLAN VIEW



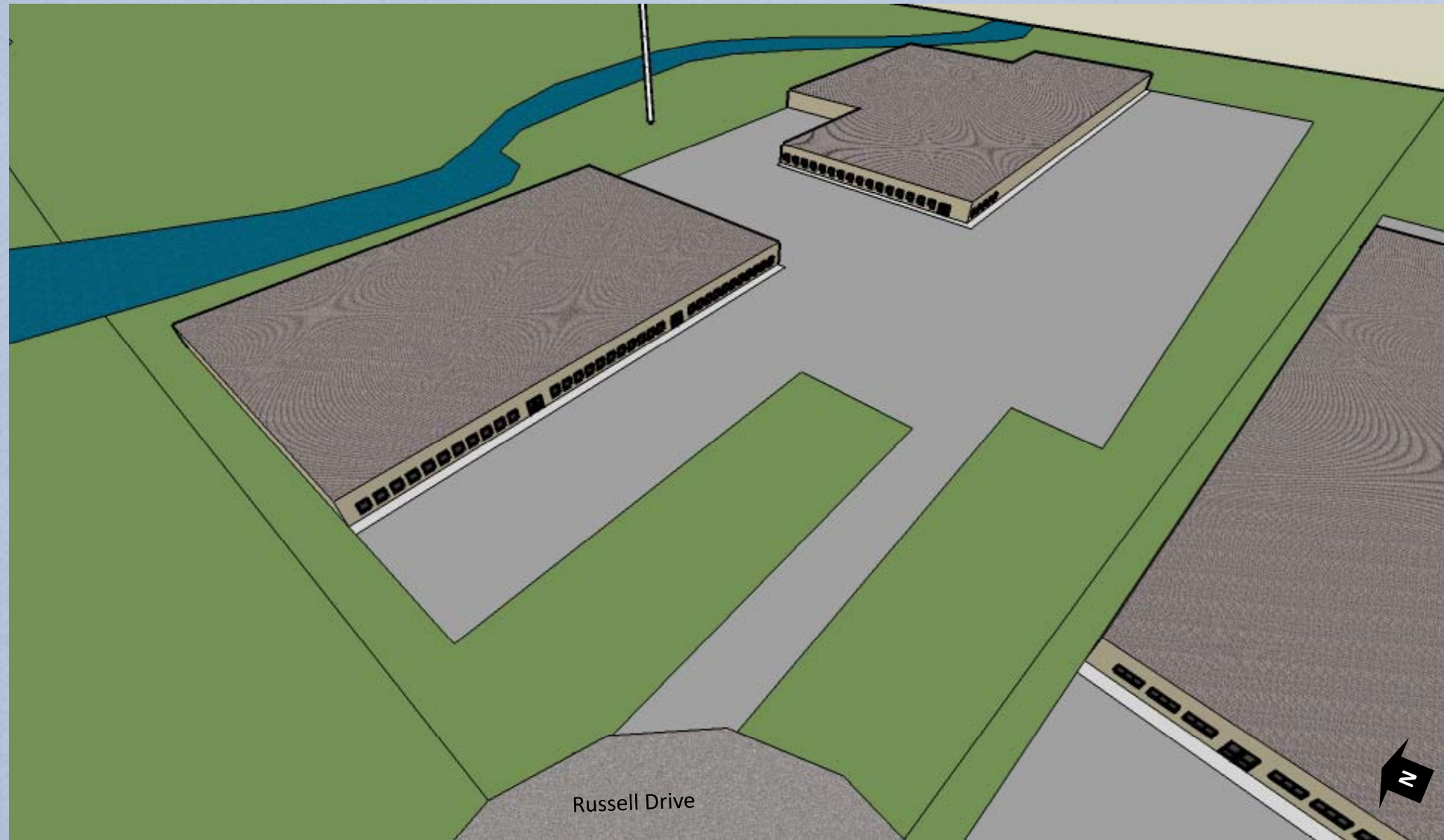
SITE PLAN OVERVIEW



Note: This Concept Plan is intended to show possible future development based upon building lot coverage ranges similar to developments previously approved in the Commerce Park. Actual building coverage will depend upon a detailed site investigation and formal site plan to determine compliance with the City's Zoning Ordinance.



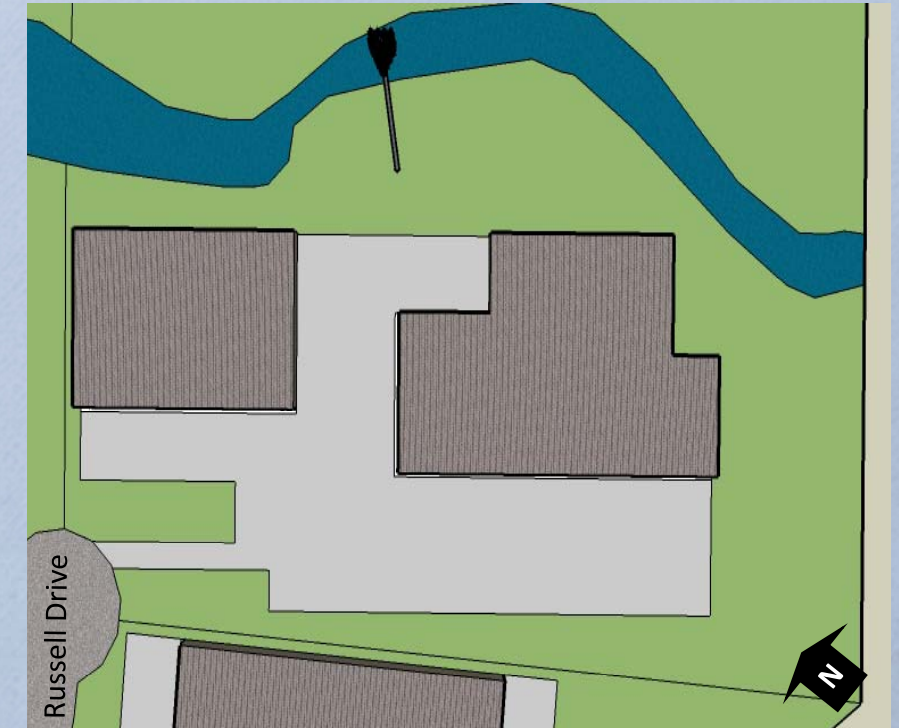
ROCKWOOD COMMERCE PARK
CONCEPT PLAN - PARCEL J



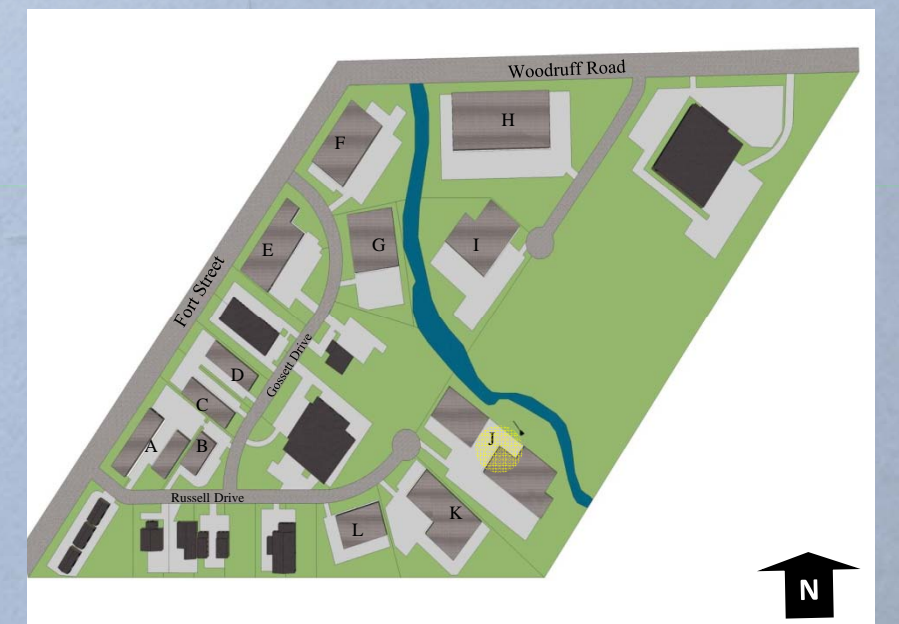
Note: This hypothetical development concept shows two buildings with a total of ~95,700 sq.ft. on a parcel of approximately 386,000 sq. ft.

Note: This Concept Plan is intended to show possible future development based upon building lot coverage ranges similar to developments previously approved in the Commerce Park. Actual building coverage will depend upon a detailed site investigation and formal site plan to determine compliance with the City's Zoning Ordinance.

PARCEL J - PLAN VIEW



SITE PLAN OVERVIEW



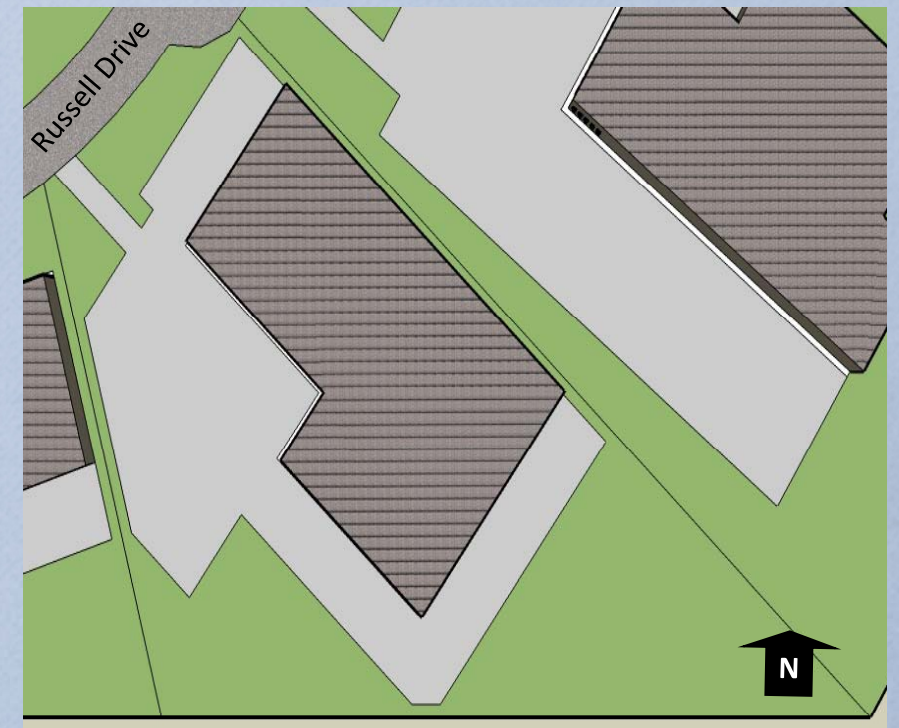
ROCKWOOD COMMERCE PARK
CONCEPT PLAN - PARCEL K



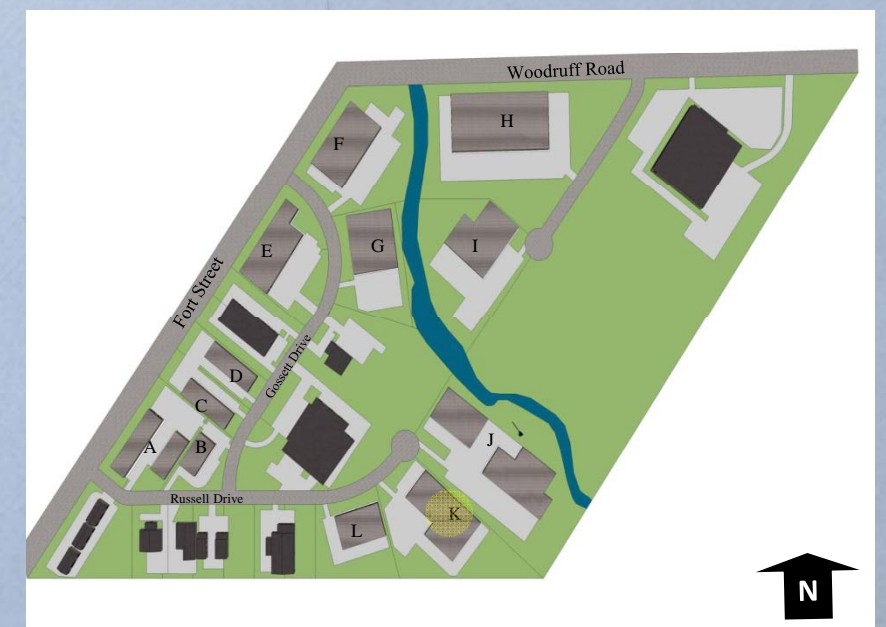
Note: This hypothetical development concept shows one building with a total of 64,845 sq. ft. on a parcel of approximately 233,000 sq. ft.

Note: This Concept Plan is intended to show possible future development based upon building lot coverage ranges similar to developments previously approved in the Commerce Park. Actual building coverage will depend upon a detailed site investigation and formal site plan to determine compliance with the City's Zoning Ordinance.

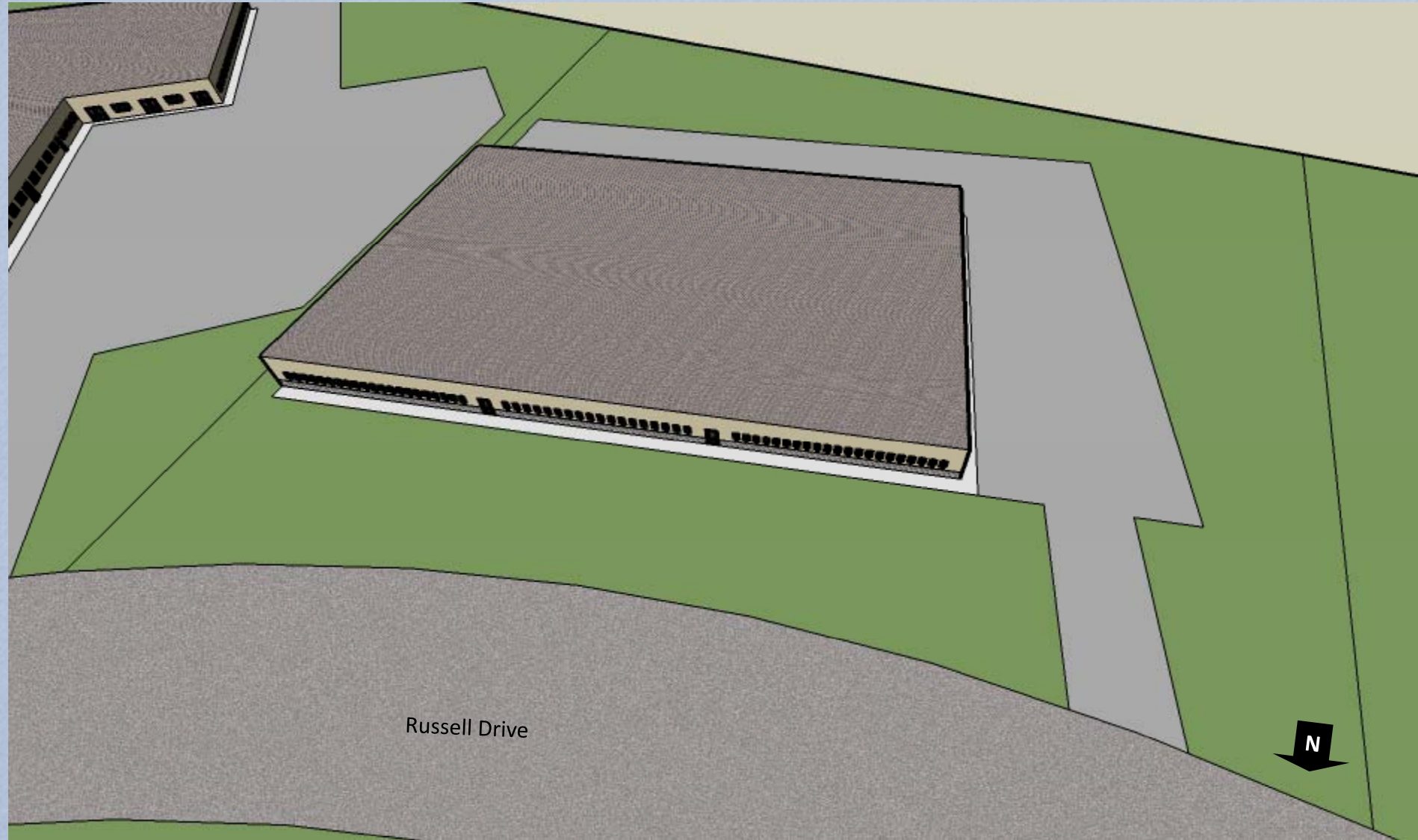
PARCEL K - PLAN VIEW



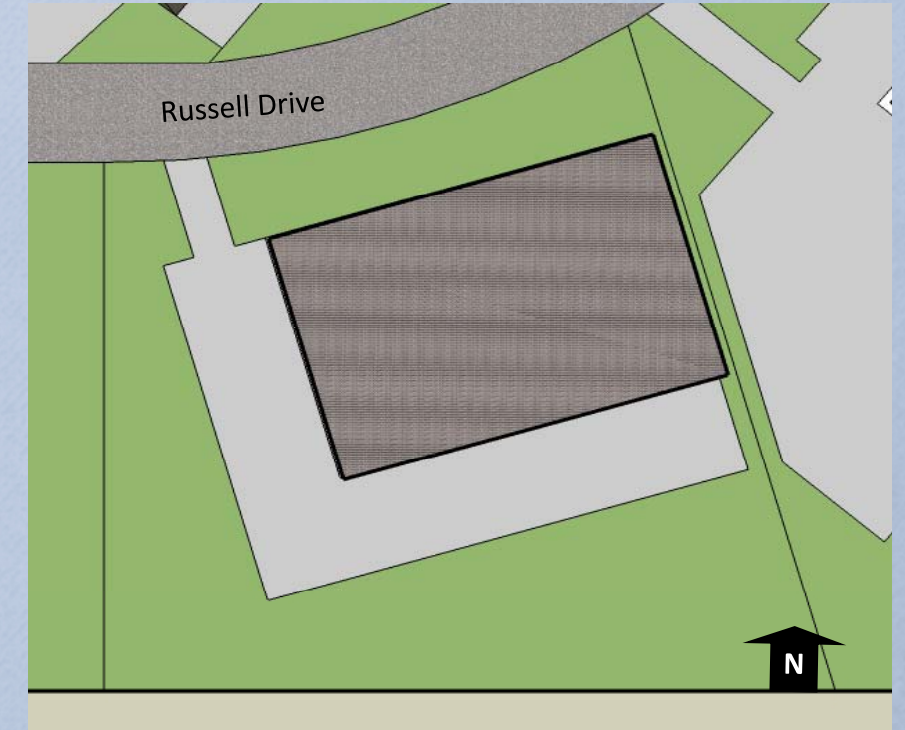
SITE PLAN OVERVIEW



ROCKWOOD COMMERCE PARK
 CONCEPT PLAN - PARCEL L



PARCEL L - PLAN VIEW



Note: This hypothetical development concept shows one building with a total of 31,845 sq. ft. on a parcel of approximately 126,000 sq. ft.

Note: This Concept Plan is intended to show possible future development based upon building lot coverage ranges similar to developments previously approved in the Commerce Park. Actual building coverage will depend upon a detailed site investigation and formal site plan to determine compliance with the City's Zoning Ordinance.

SITE PLAN OVERVIEW

